



2009

Parent/Camper Handbook

www.campwise.org

E-mail your camper this summer at wisekids@campwise.org!

Checklist

This mailing contains important information on camp policies and procedures. It is essential that you familiarize yourself with the enclosed material and return all appropriate forms by **May 1, 2009**.

- Medical Form (completed in full and signed by your child's doctor)
- Parent Questionnaire
- Camper Do-It-Yourself Questionnaire
- Transportation Form
- Parent Travel Form
- Bunk Request/Dietary Needs Card (don't forget photo!)
- Parent Volunteer Form
- Reminder: Send in any remaining camp balance!

Open House at Camp Wise

SUNDAY, JUNE 7, 2009 • 1-4 PM
RSVP Required. Call by May 22

Open to all new, returning, and prospective camp families. Bring a picnic lunch (desserts and drinks provided) and enjoy an afternoon at camp. Meet some of our summer staff and tour our facilities.

New Family Q&A Night

THURSDAY, APRIL 30 • 6:30 PM
The Mandel JCC of Cleveland
RSVP Required. Call by April 20

Parents and campers are invited to come get any last minute questions answered, meet our leadership team and shmooze with other new camp families.

RSVP to (216) 593-6250

Have a question about camp? Look here first!
(Please put on your refrigerator until your child returns from camp)

Important Dates

April 15	All fees non-refundable and non-transferable
April 30	New Family Orientation Meeting • 6:30 pm
May 1	All forms due
June 7	Open House at Camp Wise • 1-4 pm
Session I	Sunday, June 21 – Sunday, July 19
Rishonim I	Sunday, June 21 – Sunday, July 5
Rishonim II	Sunday, July 5 – Sunday, July 19
Session II	Tuesday, July 21 – Monday, August 10
Echad	Tuesday, July 21 – Tuesday, July 28
Rishonim III	Tuesday, July 28 – Monday, August 10
August 2009	Look for your Summer 2010 registration form in the mail!
Sept. 2009	Register for Summer 2010

Important Dates

Dear Camp Wise family,

Welcome! This Parent/Camper Handbook provides you with all the information you need for camp this summer. Whether you are new to Wise or you've been with camp since you were a camper yourself, please read this Handbook carefully.

We often have parents ask us, "What can I do to help make camp successful for my child?" Here's our Top 4 list of ways you can make sure summer is INCREDIBLE – for you, our staff, and most importantly – your camper.

1. It's OK – in fact it's great – for your child to face and overcome challenges at camp!

Children encounter all different kinds of challenges at overnight camp. Overcoming these challenges is what makes camp such an important and meaningful place for them. Some of the challenges are physical –climbing the tower or trotting on a horse. Others are emotional –learning how to share living space or making friends. Please encourage your child to accept these challenges in a positive way, as it is often in the context of conflict that children are able to grow and feel most successful – especially when they're able to navigate these challenges without their parents' help. Camp is structured to maximize opportunities for your child to learn resilience, confidence, and problem-solving. So if you get a letter that says, "Come and get me!" understand that you are witnessing a child's normal reaction to a challenge, and that by the time you've received the letter, odds are they've already moved on!

2. Tell us everything we need to know... and then tell us some more!

Some parents hesitate to share information about their child's behavior or past experiences out of fear the information may be used to label their child. We understand that parents want to see their child have a fresh start at camp. Knowing about a learning difficulty, ADHD, social challenges, or a major change in the family or child's life makes a tremendous difference in helping us be sensitive to your child's needs. Our only goal in having this information is to better understand your child, and make the most of their Camp Wise experience.

3. We're a camp that specializes in taking care of kids, not taking pictures. ☺

Posting photos on our website is a terrific way to give parents a glimpse of camp life, and with one photo specialist we do our best to capture the excitement of the summer. We post all cabin photos after the first day of each session so everyone can see their child. Most

often, parents will see a couple shots of their child over the summer. Please don't let the photos be your measure of your child's happiness at camp! When parents judge their child's success on whether or not they see them in photos... if they're in the front or back of the group... if they're wearing a shirt two days in a row... if it looks like they're not smiling... it's a slippery slope! Please trust that if there is something wrong with your child we will call you. Refrain from sending your child letters requesting them to "find the photographer and jump front of the camera!" This makes kids feel bad, and that's the last thing we want when they're at camp.

4. Campers get homesick ... parents get campersick – both are normal!

Getting ready for overnight camp can be just as hard of a transition for you as it is for your child. We encourage you to project confidence and excitement to your child as he/she prepares for camp, no matter how anxious or nervous you may be. Just as we teach our staff that campers "mirror" their words and behaviors, a child's attitude and comfort with leaving home will often mirror that of their parents.

For kids, camp is usually amazing, but it doesn't always feel that way instantly. Homesickness is healthy and normal to some degree, and our counselors are trained to talk with kids openly and help them work through their feelings. When a camper is told by a parent, "If you don't like it I'll come get you," that camper is likely to have a much more difficult transition. You and your child will be much better prepared with honest words of encouragement and support.

Thank you for your support and partnership this summer! We appreciate your help in working together as a community of parents, campers, and staff. At camp, we teach and live the Jewish value that we are each responsible for one another. Your endorsement of all camp policies in this Handbook is important for us. As you read through this Handbook with your camper, please help them to understand that the rules and boundaries are established to maintain camp as a safe, fun and supportive environment for everyone!

L'Shalom,



Jodi Sperling, MSW (jsperling@clevejcc.org)
Camp Director

4 Tips to Make the Summer Great

A Typical Day at Camp Wise



7:30 AM	Boker Tov! (Good morning!)
7:45 AM	Assembly
8:00 AM	Breakfast
8:45 AM	Cabin Clean-up
9:15 AM	Period 1 Chalutzim Chugim (camper electives) Ohalim Instructional Swim Noar Chugim (camper electives)
10:30 AM	Period 2 Chalutzim Instructional Swim Ohalim Chugim (camper electives) Noar Chugim (camper electives)
11:30	Village Time
12:00 PM	Lunch

1:00 PM	Rest Hour
2:00 PM	Period 3 Chalutzim Chugim (camper electives) Ohalim Free Swim Noar Cabin Activity
3:00 PM	Period 4 Chalutzim Free Swim or Lake Ohalim Cabin Activity Noar Chugim (camper electives)
4:00 PM	Period 5 Chalutzim Cabin Activity Ohalim Chugim (camper electives) Noar Free Swim
5:00 PM	Chofesh (free choice)
6:00 PM	Dinner
7:30 PM	Evening Program & Snack
9:15-9:45 PM	Lila Tov! (Good night!) Cabin Time and Lights Out (varies by age)

Choosing activities

Each day at Camp Wise, campers have a balance of chugs (hobbies) – activities they've selected individually, and cabin activities – a pre-assigned rotation of every cabin to every activity in camp. This way, campers are able to specialize in areas of interest, while trying everything at least once. Campers select their chugs on the first day of camp with the help of their counselors. We do our best to make sure every camper gets several of their first choices. Chofesh (free time) is an hour each day when all activities are open and campers can choose daily where they want to go. Our one and two-week programs are not long enough for campers to try everything, but their "taste of camp" offers them many options.

Swim Lessons

All Chalutzim and Ohalim campers (2nd-7th graders) are required to participate in American Red Cross swim lessons in our heated pool. Upon completion of a full camp session (3 or 4 weeks), campers will receive swim level cards in the mail.

Trips and Spending Money (This does not apply to Solel campers)

Every village leaves camp once each session for a day trip. The destination can be an amusement park, water park, sporting event or similar activity, and the location and date is a surprise for the campers. Noar campers (8th & 9th graders) will also leave camp once during the session for an overnight camping experience in Mohican State Park. Anytime campers leave camp they are under the close supervision of our staff. There is no need for campers to have any money with them at camp. That said, often campers do bring a small amount of spending money (\$5-\$10) for their day trip. Camp does not take responsibility for money campers bring to camp.

Camp Life...

Activities

Sports

- Archery
- Horseback Riding
- Mountain Biking
- Soccer
- Hockey
- Tennis
- Basketball
- Ultimate Frisbee
- Softball
- Kickball
- Ga-Ga
- Mini-Golf

Water Sports

- Swimming
- Canoeing
- Kayaking
- Boarding
- Banana-boating
- Aqua Jump
- Jet Skiing
- Iceberg
- Blob

Arts & Culture

- Arts & Crafts
- Pottery
- Tie-dye
- Jewelry-making
- Drama
- Guitar
- Dance
- Radio
- Video
- Israeli Culture

Outdoor Adventure

- Teva (nature)
- Low Ropes
- High Ropes
- Climbing Tower
- Vertical Playground
- Giant Swing
- Overnights
- Hiking
- Gardening



Accreditation

Camp Wise has earned “Accredited Camp” status from the American Camp Association (ACA). Approximately 25% of the resident camps in the United States have achieved this distinction. The ACA requires a close review of every facet of camp operation, including staffing, facility, program, medical, emergency, food service and other standards. There is a full on-site inspection conducted every three years.

Cabins

Cabin assignments are given out once campers arrive at camp. Cabins are assigned based on a camper's grade, their school, if they've attended camp before, their interests, and many other factors. Campers can request one cabin mate but we do not guarantee that we can meet these requests, and cabins are assigned based on the best interests of the group. We do our best to place each camper with one requested friend, and mutual requests are given priority. We do not accept negative cabin requests (i.e. My child cannot be placed with...).

Birthdays at Camp

Birthdays are so much fun at Camp Wise! If your child's birthday is at camp, we will provide a birthday cake and celebration for them. On your child's birthday we allow you to call and speak to your child (please call ahead of time to arrange), and we will make sure that any non-food birthday packages are delivered that day.

Bar and Bat Mitzvah Training

Weekly Bar/Bat Mitzvah Training is a complimentary service offered to any child whose Bar/Bat Mitzvah is within six months of camp. Please send copies of all materials with your child and call us to arrange tutoring for your child by May 1, 2009.

Jewish life at Camp Wise

Wise offers campers the opportunity to experience the warmth and joy of living as part of a vibrant Jewish community. It is our goal to integrate positive Jewish identification, Jewish values and a connection to Israel into the total camp experience. This is done through informal educational programming, Israeli staff, Jewish music, and community rituals. Shabbat, in particular, is a beautiful, almost magical experience at camp, when the schedule changes to allow for more relaxing, singing, and playing. Each village of campers has the opportunity to lead a Shabbat for the entire camp, and campers all play an active role. Camp Wise is a Kosher facility.

...More Camp Life

Transportation

The camping experience begins with the bus ride, and whenever possible all campers ride the buses to and from the city closest to their home. We require a completed transportation form for every camper attending camp.

Departures:

First Session	June 21
Rishon I	June 21
Rishon II	July 5
Second Session	July 21
Echad	July 21
Rishon III	July 8

Please be sure to arrive at the bus location at least 30 MINUTES BEFORE departure time. Buses will not wait for late campers.

Returns:

Rishon I	July 5 [†]
Rishon II	July 19 [†]
First Session	July 19
Echad	July 28 [†]
Rishon III	Aug 10 [†]
Second Session	Aug 10

Please be sure to arrive at the bus location 15 minutes prior to approximate bus arrival time.

Locations:

Beachwood*		
Session 1 The Agnon School (use JCC S. Woodland entrance) 26500 Shaker Blvd. Beachwood, OH 44122	1:00 PM	10:15 AM
Session 2 The Mandel JCC 26001 S. Woodland Road Beachwood, OH 44122	1:00 PM	10:15 AM
Akron/Canton		
Akron JCC 750 White Pond Drive Akron, OH 44320	12:30 PM	10:00 AM
Toledo**		
Toledo JCC 6465 Sylvania Sylvania, OH 43560	11:00 AM	11:45 AM
Columbus		
Leo Yassenoff JCC 1125 College Ave. Columbus, OH 43209	10:30 AM	11:30 AM
Dayton**		
Dayton JCC 525 Versailles Centerville, OH 45459	9:30 AM	12:30 PM
Youngstown**		
Youngstown JCC 505 Gypsy Lane Youngstown, OH 44505	12:30 PM	10:30 AM

[†] Echad and Rishon bus service will be based on numbers of campers. Please contact the office for more information.

* Note different Beachwood locations. To assist our traffic flow for all sessions, please enter through the JCC South Woodland entrance and you will be directed to the bus.

** Dayton, Toledo, and Youngstown bus service will be based on numbers of campers. We will let you know if these buses are running.

Transportation

Baggage

Please pack in duffel bags only, using a maximum of two duffel bags per camper. Please do not send trunks, foot lockers or portable drawers. Please make sure all luggage is securely closed and labeled.

Two baggage tags are enclosed. If you should require additional tags, please contact our office. For security purposes, only luggage with our Camp Wise tags will be permitted on the buses or luggage trucks. Labels are color-coded by village. Please put your camper's name and city on each tag. These labels help us deliver your child's luggage to the appropriate area of camp.

Packing

The Camp Wise packing list is based on a 10-day supply. Please use this list as a guide while packing, and regardless of your child's age, please supervise their packing! Each camper has the same amount of space in the cabin for their belongings, so please remind them at home that they are coming to camp – not Club Med!

Campers and staff dress informally at camp – only pack comfortable and practical shoes and clothing. Clothing with lewd or suggestive language or references to alcohol or drugs is prohibited. If you or your child is not comfortable with an item of clothing getting lost or dirty, don't pack it. Please note that we do not supply bedding or pillows.

Camp Clothing

Each camper will receive an extremely cool Camp Wise t-shirt. Typically campers like to tie-dye this t-shirt at arts & crafts. Additional camp gear is available online for purchase (not by campers during camp) and can be delivered to campers during the summer or sent home.

Shabbat Clothing

Shabbat is a very special time at camp. In keeping with Camp Wise tradition, campers dress up on Friday evenings, marking Shabbat as a unique time. Girls usually wear casual skirts, sundresses, or pants, and boys typically wear nicer pants or shorts. High heels, fancy or revealing clothing, and valuable jewelry are not appropriate for Shabbat at camp.

Lost and Found

Camp Wise cannot assume responsibility for lost or damaged items. While we request that you do not send clothing or items of value with your children, please explain the importance of keeping track of their belongings while at camp. We display lost and found items for the campers several times throughout each session, but still many items go unclaimed. Unclaimed unlabeled items will be donated to charitable organizations a week after the conclusion of each session. Clearly labeled lost items will be kept until Labor Day, and will then be donated. We do not keep lost underwear, socks, or towels even if they are labeled.

Laundry

Professional laundry service is included in the cost of camp and is provided as follows:

For Session A (4 weeks): Laundry is done twice	For Session B (3 weeks): Laundry is done once	For Rishonim (2 weeks): Laundry is done once	For Echad (one week): No laundry
---	--	---	-------------------------------------

Each camper's laundry will be individually laundered and returned folded and in their laundry bag. Campers should bring two laundry bags with their full name written clearly on the bag in permanent marker. We also recommend a mesh bag with a zipper for socks. Each item of clothing should be labeled. In collecting, laundering, and returning laundry for approximately 600 people, occasionally items are misplaced.

Please do not bring...

Cell phones, **handheld game systems (Gameboy, Nintendo DS, etc.)**, knives, personal televisions, DVD players, animals, drugs, alcohol, cigarettes, cell phones, matches, lighters, candles, incense, cell phones, fireworks, pornography, video cameras, computers, cell phones, walkie talkies, beepers, or weapons. Did we mention **CELL PHONES?***

Do NOT send ANY food to camp with your children. Any food brought into camp will be confiscated. Food in cabins leads to theft and jealousy among children, raccoons and mice in our cabins, and compromises our Kashrut policy. We serve three wholesome, nutritious meals and two snacks each day, and food can always be made available during other times if a child is hungry. In addition, campers receive a snack from canteen every afternoon.

*** If you permit your child to bring a cell phone to Camp Wise, you are impairing us from doing our job, and you're teaching your child that they don't have to abide by the rules. Campers use cell phones to call from cabin to cabin at night, and they call their friends outside of camp, taking away from the camp community. If your child is found to have a cell phone in camp, it will be confiscated, and we reserve the right to send your child home immediately without a refund. Please do not allow your child to be put in this position.**

Visiting Camp

Camp Wise warmly welcomes all parents, family, alumni, and friends to come to our pre-summer Open House – Sunday, June 7, 2009, from 1 pm – 4 pm. When camp is in session, visitors are not permitted into camp. Please share this policy with friends and family. An overnight camp is a very special place, and it is important for your child's sense of independence and self-reliance that they do not have parents "dropping by," including "just to drop something off." A visit from a parent can initiate homesickness in other campers, and it can create friction within a cabin group. Please respect our community and respect our campers by allowing our program to run uninterrupted by visitors. Thank you!

Coming and Going

We do not allow campers to come and go from camp on dates other than the designated start and end dates of sessions. If you think have an extenuating circumstance, contact the camp office in writing prior to the camp season for approval.

How to Pack & When to Visit

How To Reach Us

Camp Wise – Summer

June 1 – September 1
13164 Taylor Wells Road
Chardon, OH 44024
Phone (440) 635-5444
Fax (440) 635-0201
Emergency-Only Number:
(216) 870-1467
E-Mail: wisekids@campwise.org
Web Site: www.campwise.org

Beachwood Office

September 5 – June 1
The Mandel JCC of Cleveland
26001 South Woodland Road
Beachwood, OH 44122
Phone (216) 593-6250
Fax (216) 831-7796
E-Mail: wisekids@clevejcc.org

Our summer office is open between 8:30 am and 5 pm Sunday through Friday. During Shabbat and after hours phone messages are checked to screen for emergencies. During the camp season our Beachwood office phones are not checked – please only use our summer phone number!

We will happily answer any questions you may have throughout the summer. Your concerns about your child's welfare are important to us. If necessary, parents may call camp during the summer to find out how their child is doing, and your call will be returned by a member of our Senior Staff within 24 hours with honest, up-to-date information. Because all of our staff (including the director!) are normally outside with the campers, we are not instantly available to come to the phone. Please keep in mind that a sad letter may make you want to jump in the car and rescue your child, but these letters are not unusual at the beginning of a session, and usually by the time you get the letter the camper has forgotten even writing it! Campers are only allowed to use the telephone in an emergency or on their birthday. Please do not ask to speak to your child while they are at camp.

If you have an emergency after regular hours, please indicate that on the message, or call Jodi on her emergency-only cell phone at (216) 870-1467.

Communication

Mail

Incoming... Please write your child often! It means so much to campers to hear from home frequently. For first time campers especially, send mail before they even leave for camp, so it is waiting for them the first day. Mail is distributed every day after lunch except Saturdays.

Outgoing... Please keep in mind that at camp, the old saying, "No news is good news" holds true. While we have designated letter-writing days, even a certain unnamed camp director used to send her parents home empty envelopes so she could get outside and play! Please remember to send your child with plenty of stamps and envelopes. Please send mail to your child at:

**Your child's name
Camp Wise
13164 Taylor Wells Road
Chardon, OH 44024**

Phones

While we are happy to discuss your child's welfare with you, campers are not allowed to use the telephone except for emergency situations. Please explain to your child that he/she won't be talking to you on the phone, and that there are a lot of caring counselors and staff for them to talk to at camp. We want to help homesick children learn how to communicate properly when they are having difficult times. By talking to a parent on the phone, all the hard work of separating at the camp bus is undone and the child feels renewed vulnerability and separation anxiety. We find frequent upbeat letters to be a much better way of letting your child know you love them.

Packages

After input from many of our camp families, **we will no longer be accepting packages at Camp Wise.** All packages will be returned to the sender. We will only allow flat, non-padded envelopes (max. size is 8.5" x 11").

If your child forgets a necessary camp item, you can address the package to "Camp Office – Forgotten Item" and clearly mark **inside** the package your camper's name. Our office staff will open the package and make sure your child receives the item. **Non-food birthday packages are still permitted and should be addressed to "Your Child's Name – Birthday Package."**

E-mail

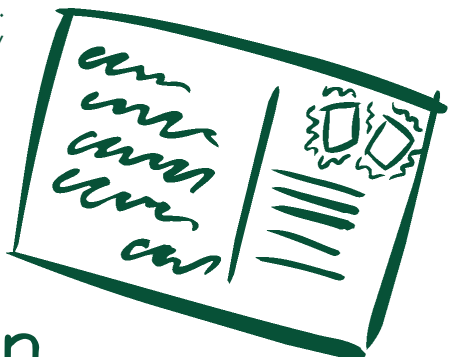
Incoming... We offer our camp families the complimentary service of one-way e-mail. The e-mails are printed out and distributed with the mail. Please limit your e-mails to one page, and do not send attachments. Attachments, pages of sports scores, and photographs will not be printed out. Thank you in advance for complying with this request! **The 2009 e-mail address to use for campers is: wisekids@campwise.org.** Please put your child's name in the subject line.

Outgoing... Campers do not have access to send outgoing e-mail.

Website

We are so excited about what we do at camp that we want to share it with you right away! We post pictures of camp on our website at www.campwise.org as a way of including our camp families in the fun. During the summer while campers are at camp, the photo album requires a username and password. We will give you this information at the bus when you drop off your child. Please remember this is an extra-special service we provide that takes a lot of time and work, and occasionally there are days when pictures are not posted.

Each Friday before Shabbat you can go to our website to read the weekly Director's Shabbat-o-Gram highlighting the events of the past week at camp.



Communication

Medical

While we expect most campers will stay healthy throughout the summer, occasionally campers become ill or injured at camp. To deal with such situations, we have a professionally staffed infirmary at camp.

Please do not send your child to camp on the first day if he/she has had a temperature, cold, or flu within 24 hours. While it may seem devastating to your child to have to arrive a day late, it is all the more devastating for an entire cabin to catch your child's illness and have to leave camp early.

Illness or Emergency

Treatment at the infirmary in 2009 will be based on our Camp Wise Standing Orders (detailed approved treatment for ailments, injuries, and illnesses), which are reviewed and approved by a physician. This results in quality and consistency of medical care.

You will be notified if... Your child has been in the infirmary for more than 24 hours, has been taken to an out-of-camp doctor, emergency room or clinic, or has had antibiotics prescribed.

You will NOT be notified if... Your child spends less than 24 hours in the infirmary or your child has headaches, mild cuts or bruises, insect bites, sore throats or upset stomachs.

If a child is unable to return to their cabin after 24 hours in the infirmary, that child may no longer be able to stay in camp. In that situation it is the responsibility of the parent or guardian to pick up the child from camp. Once the child is deemed no longer contagious — either from our medical staff or in writing by your child's physician — he/she will be permitted to return to camp.

Medical Forms

We have sent you a yellow 2009 medical form to be filled out by a parent and doctor. Campers will not be allowed in camp – or even on the camp bus – if we have not received this form by mail prior to the summer. The medical form is due to our Beachwood camp office by May 1, 2009. The state of Ohio requires a current medical form be completed each year a child attends resident camp.

Insurance

For accidents, injuries, or illnesses that require off-site medical attention, charges for physician's services, emergency room fees, and all medications, billing will be sent directly to the camper's parents or their health insurance carrier as named on the insurance release form. Please be advised that Camp Wise does not provide accident or health insurance for campers. Please complete the insurance section on the appropriate form, **and send us a front and back photocopy of your insurance card.** If your insurance requires the use of designated facilities, you must make the appropriate arrangements with the local hospital, clinic, and your insurance carrier prior to the summer and make sure we have this information in writing so we do not take your child to a place not covered by your insurance.

Medications

All medications must be handed to a designated staff member by the parent prior to the camper boarding the camp bus. All medications must be sent in the ORIGINAL container, placed in a Ziploc bag, with clear written instructions including the child's name and the name of the medication. All medications will be stored and administered through our infirmary.

We do not allow campers to keep medications in their cabins for the following reasons:

1. Camp counselors cannot be responsible for administering medications.
2. There is potential for overdose or sharing medications.
3. Even the most responsible children can easily forget to take their medications.

Please explain to your child that the only medications allowed to be kept in the cabin and self-administered are inhalers for asthma, lactose pills and epi-pens for severe allergic reactions.

Only essential or prescription medications should be sent. Please do not send any vitamins or over-the-counter medications such as Tylenol, Sudafed, or Advil. When necessary, these over-the-counter medications will be dispensed through our infirmary. Please indicate on your child's medical form if there are any over-the-counter medicines they should not take.

Eye Care

If your child wears glasses, please send them with a second pair, as glasses are often broken or misplaced at camp. If your child wears contact lenses, please send them with extra lenses and cleaning solution.

Orthodontics

We are equipped at camp to handle minor repair to braces. Should more attention be needed, we will bring your child to our local orthodontist, unless we are instructed otherwise on your child's medical form. Should your child be taken out of camp, you will receive a phone call.

Lice

All campers and staff are checked for lice upon arrival at camp. Whether or not campers with lice are permitted to stay at camp is decided on a case-by-case basis. Camp Wise retains the right to send a child home with lice until they have been cleared by a doctor to return.

Severe Food Allergies

We make every attempt to accommodate campers with various food allergies, but we are NOT a nut-free facility. We do not cook with nut products, and we will never serve a food that contains nuts without first notifying our nut-allergic campers, but we do have peanut butter available at meals in a designated area of the dining hall, and campers are allowed to bring peanut butter sandwiches back to their cabin's table to eat. If your child's allergy is so severe that this will be a problem, please contact Jodi immediately.

If your child is coming to camp with a life-threatening allergy, we require that he/she come to camp with 2 epi-pens: one for the counselor and one for the infirmary. Also, please write us a letter communicating the specific nature of the allergy or health concern – even if you think we already know about it. After that, both you and Jodi must come to an agreement that Wise remains an appropriate and safe place for your child.

“Drug-Free Vacations”

Please do not place your child on a “drug-free vacation.” Children need to be able to pay attention, focus, participate, and follow directions just as much at camp as they have to at school. Both in the social climate of the cabin and at activities, children who benefit from these medications at home will struggle to focus and control impulses if not on their medication while at camp. A child cannot make use of what camp has to offer if he/she can't make sense of it and focus on the world around them. If you still plan on considering a “drug-free vacation” for your child, you must contact Jodi at the camp office.

Medical

Parent Partnership

At Camp Wise, we are committed to working closely, respectfully, and responsively with our camp parents. We take great pride in our positive relationships with our families, and appreciate the support we receive both during camp and throughout the year. However, in the rare event that we determine we have reached an impasse with a parent – such that it undermines our ability to work effectively with the family – we reserve the right to send their child home from camp without a refund.

Camper Code of Conduct

Parents, please read this section with your child.

We encourage campers and staff to respect themselves and others, our camp and facilities, and our earth and environment. Camp Wise is committed to providing a safe camp environment in which relationships are characterized by dignity, respect, and fair treatment. Any behavior in violation of the following policies or practices may be cause for immediate expulsion from camp with no refund of camp fees:

- Campers must not bully or threaten other campers or staff. This behavior is not tolerated.
- Campers must stay with their assigned group with appropriate supervision.
- Campers may not leave camp grounds, unless on a camp-related program.
- Campers must attend all scheduled activities, meals, and programs, unless excused by a staff member, and then only if supervised.
- Campers must follow set curfew hours and may not “sneak out” of their cabin.

Fire Risks

Campers may not possess or use any kind of tobacco products, matches, lighters, fireworks, fire crackers, or open flames for any purpose at camp.

Raids

The only kinds of “raids” permitted are those planned, supervised, and cleared by the director. Removal or destruction of personal property is not permitted.

Language

To demonstrate respect for others and ourselves, only appropriate language is acceptable.

Boundaries

Girls are not allowed in boys’ cabins, and vice versa. This extends to all bathrooms and showers.

Weapons

Weapons are not permitted at camp or during off-site programs. In addition to all assumed weapons (knives of any kind, etc.) a weapon also includes any items, body parts, or words used in an inappropriate way, which may cause threat, harm, or intimidation to others or to yourself. If there is any suspicion that a camper is self-mutilating or inflicting pain upon themselves in anyway, the director reserves the right to expel the camper.

Drugs and Alcohol

Possession, consumption, or use of alcohol, illegal drugs or the illegal use of legal drugs is prohibited at camp.

Graffiti

Graffiti is only permitted in certain locations designated by the Director. If campers write on camp property in undesignated areas, parents will be billed at a rate of \$25 per “graffiti” to cover the cost of cleaning.

Behavior Contracts

Camp Wise is dedicated to creating a positive summer experience for every camper. If a camper’s behavior is taking away from their camp experience or the experience of others, a discussion in regards to that behavior will occur between the camper and the counselor. When behavior continues to be problematic and the camper does not respond to interventions by the bunk staff, a higher level intervention will be implemented including the Village Supervisor and when necessary, a member of the year-round professional team. One tool we use in these situations is a behavior contract, which is written with the camper and is signed by all parties involved. Parents will be notified if their child is placed on a behavior contract. If a child is not able to hold up their end of the contract, the director reserves the right to send the camper home without a refund.

Year-Round Online Communication Policy

One of the greatest things about the internet is that our campers and staff are able to keep their camp community intact year-round! We think that’s great, as long as everyone remembers that our camp community – whether you’re at camp or talking about camp online – is based on trust and respect. When you’re online, it feels anonymous and private, and like no one but your friends will see what you post. That’s not true! Anything you post on pages like MySpace, Facebook, or YouTube can and will be seen by grown ups, including your teachers, future college admissions officers, and parents – because the internet is public space. We support your opportunity to connect with your camp friends online, but we want you to do so in a safe and respectful way. If you reference Camp Wise online, another camper or a future camp parent is just as likely to find your content as they are to find the official camp website. In light of this we require that all campers observe the following guidelines when referring to Camp Wise, its programs or activities, or its campers and/or staff members online:

- You must be respectful in all online communications related to or referencing Camp Wise or members of the Camp Wise community.
- You must not use obscenities, profanity, or vulgar language.
- You must not use the internet to criticize Camp Wise, other campers, or employees of Camp Wise.
- You must not use the internet to harass, bully, or intimidate other campers or employees of Camp Wise. Behaviors that constitute harassment and bullying include, but are not limited to, comments that are derogatory with respect to race, religion, gender, sexual orientation, color, or disability; sexually suggestive, humiliating, or demeaning comments; and threats to stalk, haze, or physically injure another person.
- You must not use the internet to discuss engaging in conduct that is prohibited by camp policies, including, but not limited to, the use of alcohol and drugs, sexual behavior, sexual harassment, and bullying.

If we discover rules to be broken, we will contact the parents of the involved campers. A camper who abuses these rules may not be invited back to Camp Wise.

Creating “Shalom” Together